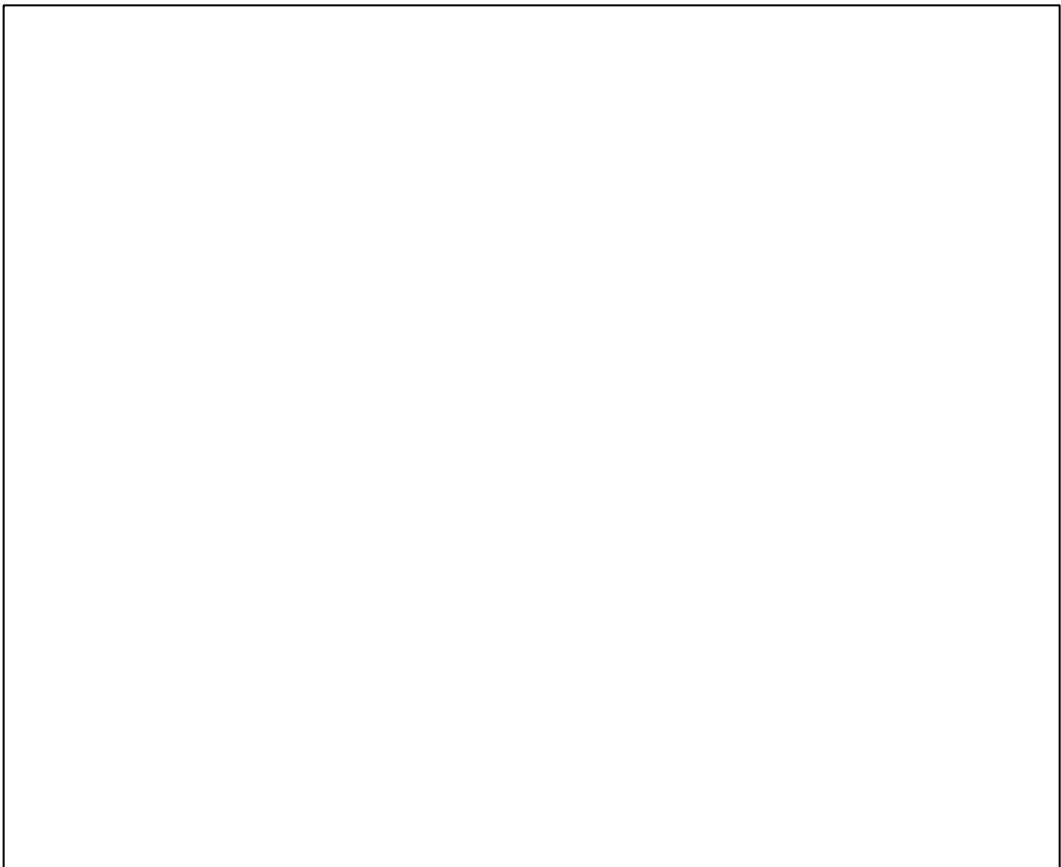
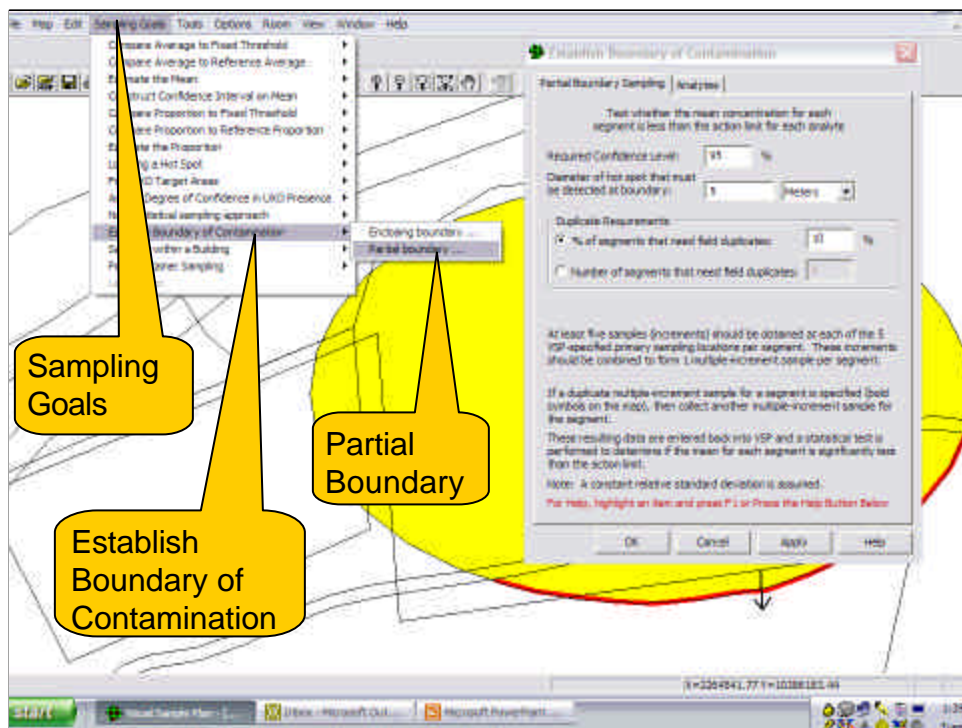
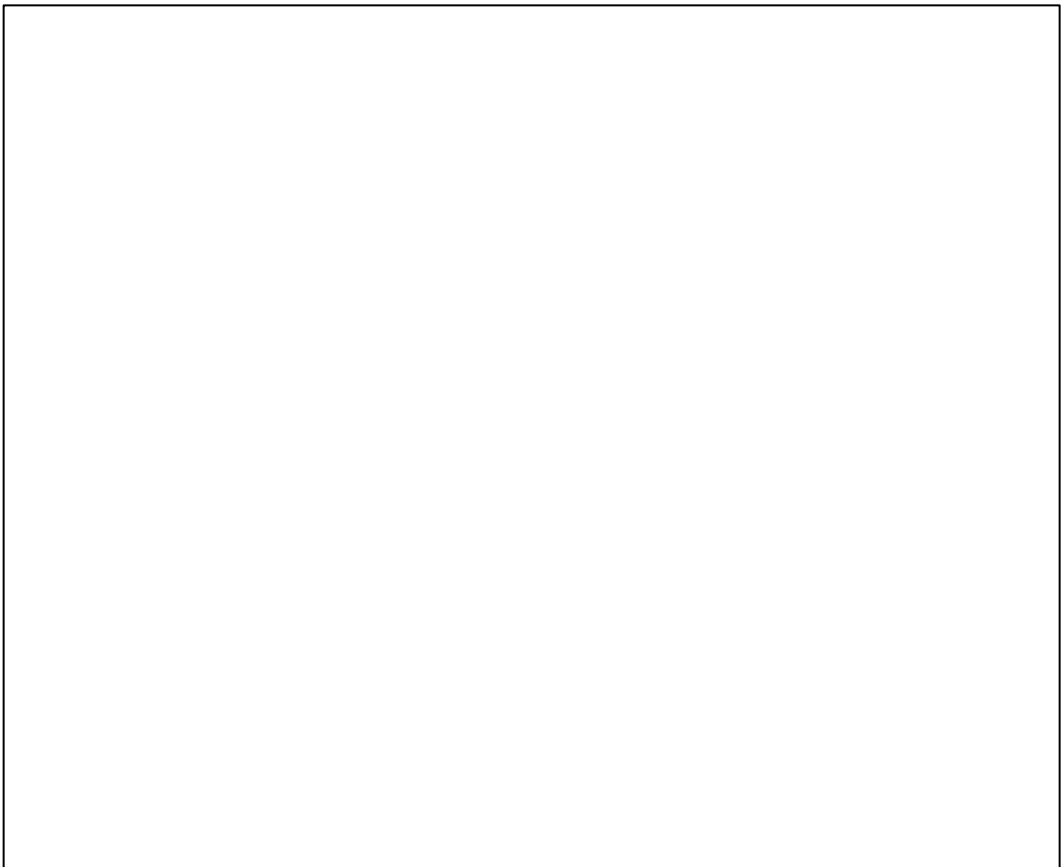
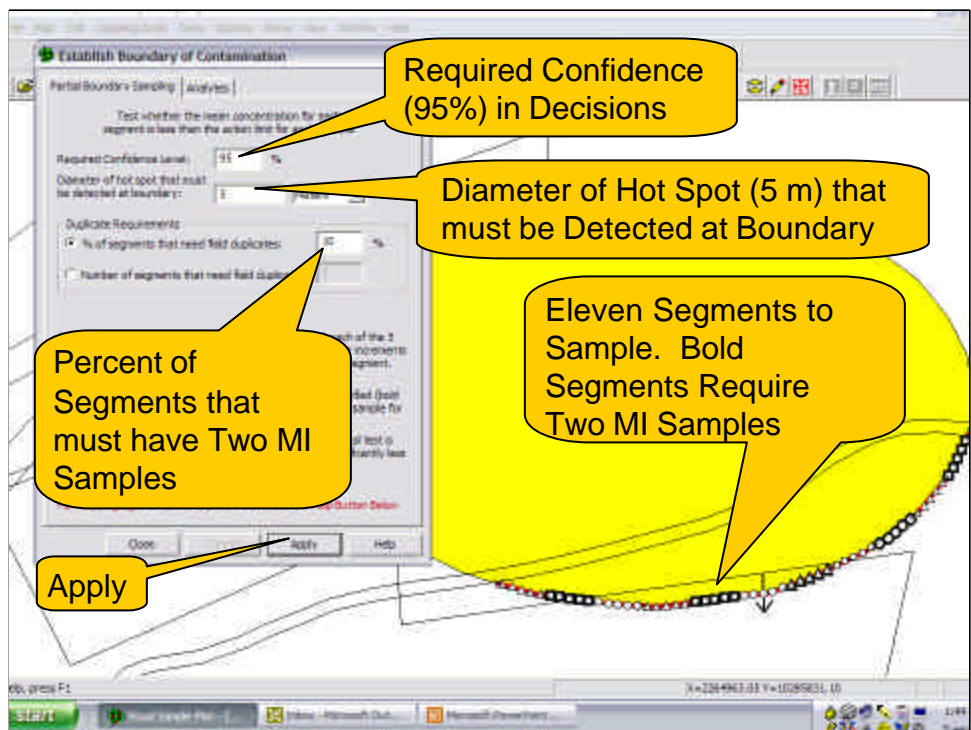


Range Sustainability (VSP)



Range Sustainability (VSP)



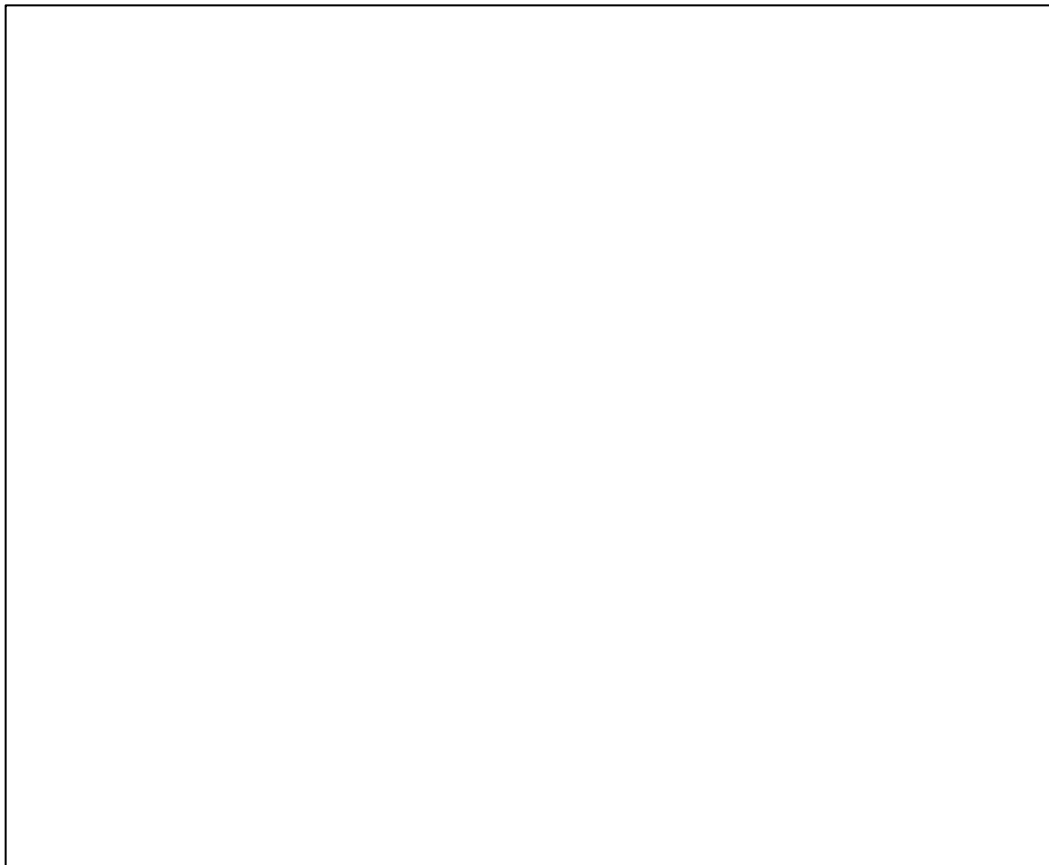
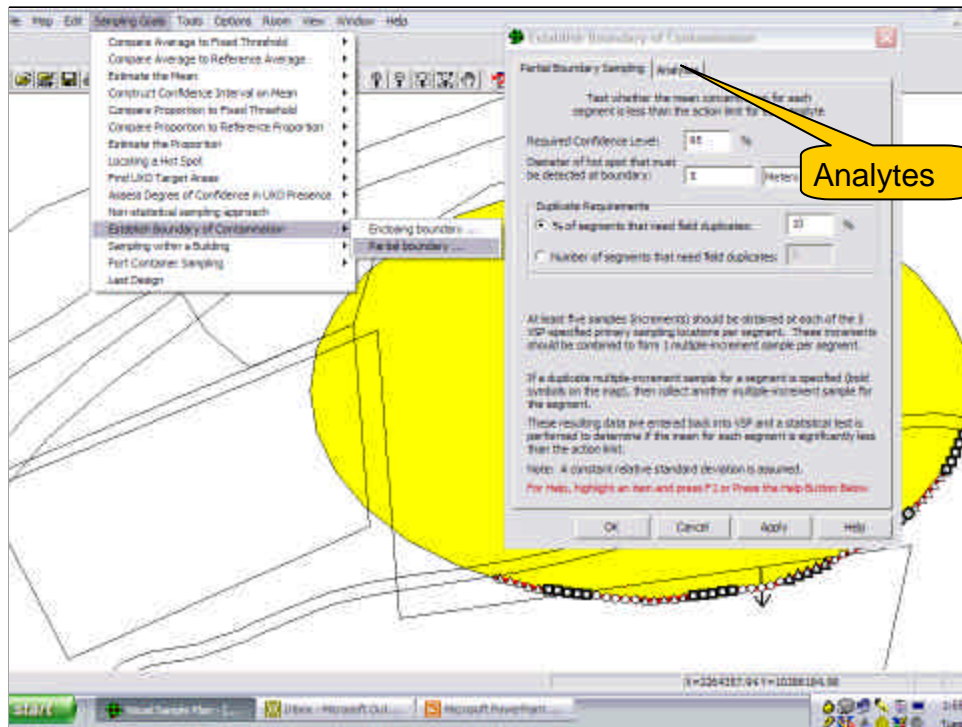
Specify Constituents of Concern

- ▶ Click on the **Analytes** tab at the top of the dialog box.
- ▶ This brings up the default list of explosives constituents (TNT, RDX and HDX), their Action Limits and units of measurement (ppm)
- ▶ VSP user can change the list of constituents and the action limits

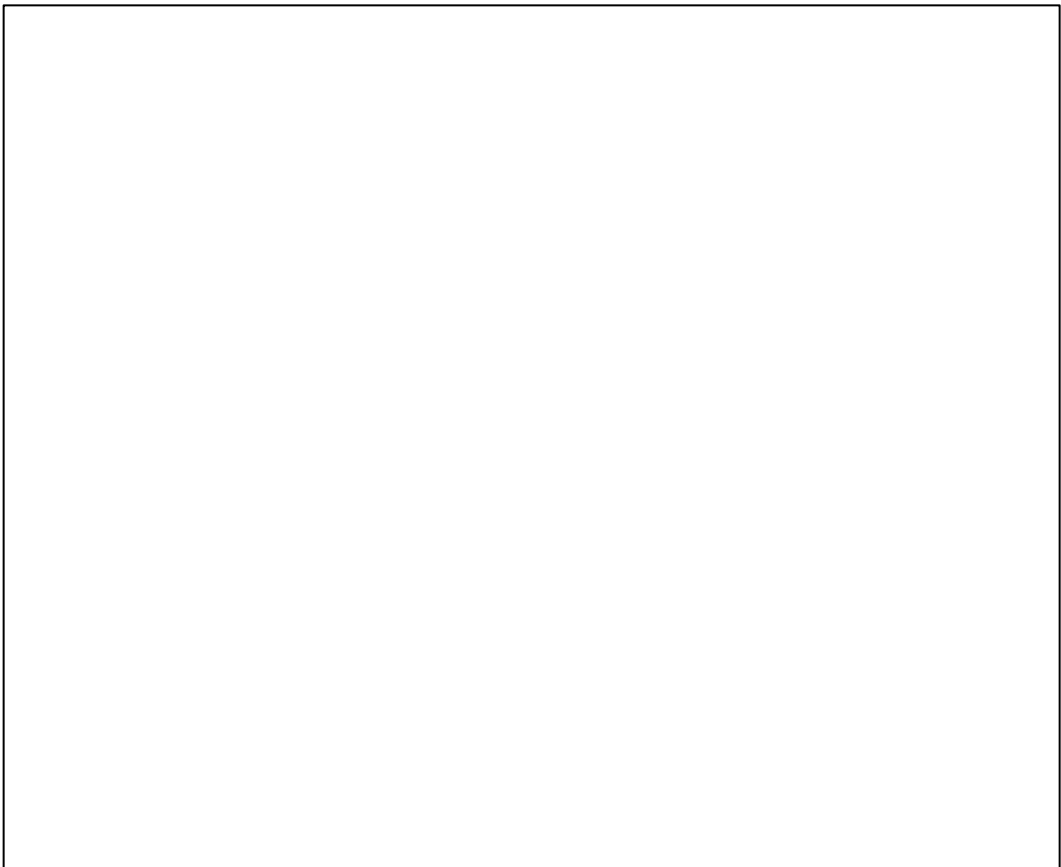
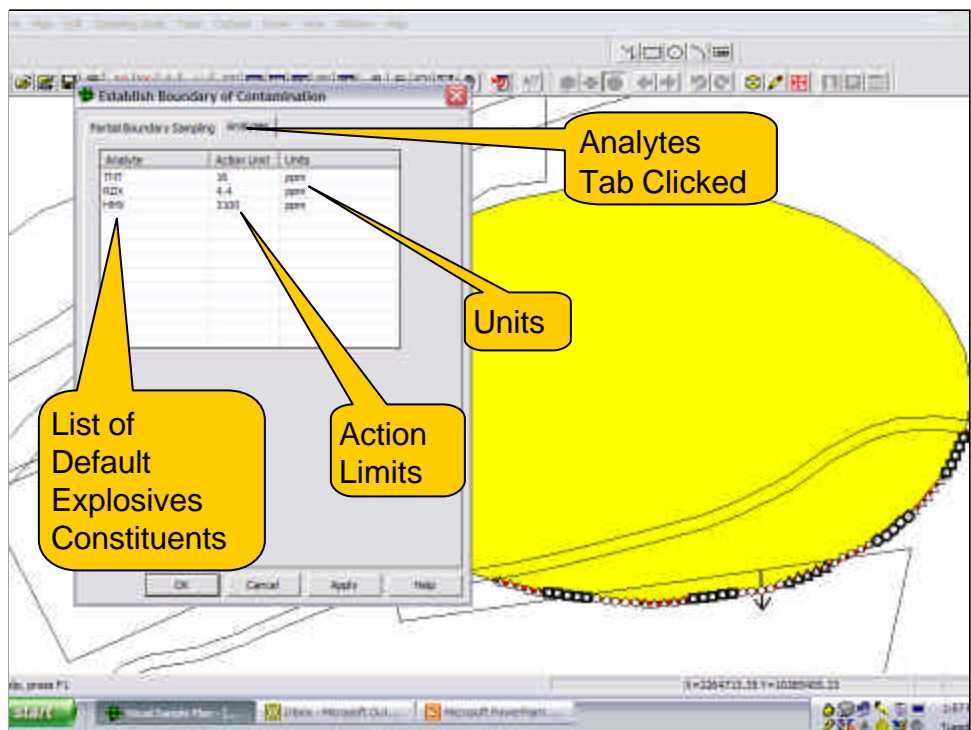
Battelle

PNWD-SA-7032 / 27

Range Sustainability (VSP)



Range Sustainability (VSP)



Obtain MI Samples in each Segment

- ▶ Two MI samples must be collected in at least 5 or at least 10% of the segments
 - ◌ One MI sample is collected in other segments
 - ◌ Segments that require 2 MI samples are selected at random by VSP
 - ◌ The project planning team decides where in the segment to collect the second MI sample
- ▶ Each MI sample is formed by pooling and mixing at least 5 small soil samples (increments) collected in the vicinity of each of the 5 Primary Sample Locations in each segment
 - ◌ Hence, at least 25 soil increments are used to form each MI sample
 - ◌ Primary Sample Locations are evenly spaced along the segment
- ▶ The project planning team chooses the pattern of soil increment sampling locations around each Primary Sample Location

Battelle

PNWD-SA-7032 / 30

Measure Each MI Sample for Explosives Constituents

- ▶ Measure each MI sample for TNT, RDX and/or MDX in the manner prescribed by the project planning team
- ▶ If more than one measurement for a constituent is obtained for a MI sample, then the average of the measurements for that MI sample and constituent should be entered into VSP

Battelle

PNWD-SA-7032 / 31

Enter Measurements into VSP (Illustrated on Next Slide)

- ▶ First, open the VSP file where the **Sample Area** and boundary map are stored
- ▶ Click the **Map View** button on the VSP toolbar to display the **Sample Area** and boundary segments
- ▶ For each segment, place the cursor over the segment and click the right mouse button to bring up the **Sample Information** box
- ▶ Enter the explosives constituent measurements into the appropriate rows in the box
 - ◀ For segments with 2 MI samples, enter a measurement for both samples
- ▶ Click “OK” to close the box for that segment
- ▶ Repeat above process for each segment

Battelle

PNWD-SA-7032 / 32